

Times of the Day

A: Match the activity to the part or parts of the day when it might usually happen.

Eating breakfast

Brushing teeth

Bedtime story

Dinner

Lunch

Getting dressed

Getting Undressed

Waking up

Going to sleep

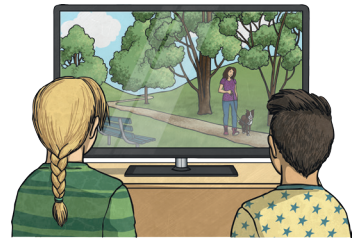
Have a bath

Play with friends

Watch TV



Morning



Afternoon



Evening

B. Select the correct word to fill in the gap.

before

after

next

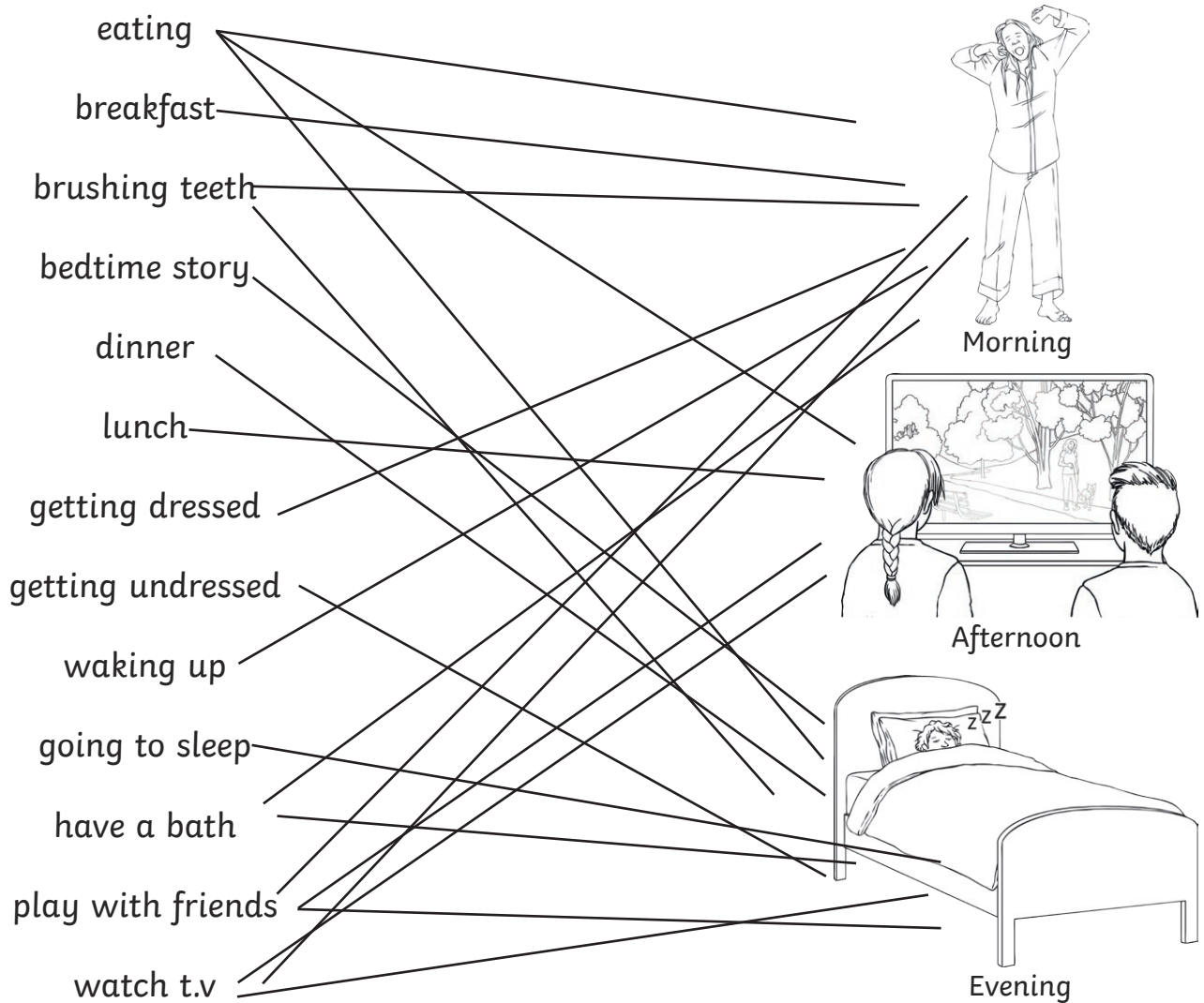
then

first

1. _____ tea, we have our pudding.
2. We get undressed _____ we go to bed.
3. _____ we eat, we wash our hands.
4. _____ we get dressed _____ we go out.
5. We went on holiday _____ we came home.
6. _____ it rains, there are puddles.

Times of the day **Answers**

A: Match the activity to the part or parts of the day where it might usually happen.



question	answer
B	1) after
	2) before
	3) before
	4) first, then
	5) then
	6) after