

**Key Vocabulary**

<b>climate</b>	The average weather conditions over a long period of time.
<b>dense</b>	Closely packed together.
<b>equator</b>	An imaginary circle around the Earth which divides it into two equal parts.
<b>humid</b>	Feeling very damp due to water vapour in the air.
<b>oxygen</b>	The gas that humans and animals need to breathe in order to stay alive.
<b>species</b>	A group of similar animals or plants.
<b>tropical</b>	Somewhere that is warm all year round, but which has rainy seasons.

The plants of the Earth's rainforests produce most of the world's **oxygen**.

**Location of Tropical Rainforests**



A rainforest is a very **dense**, warm and wet forest with a tropical **climate**.

They are habitats for millions of different animals and plants.

**Climate**

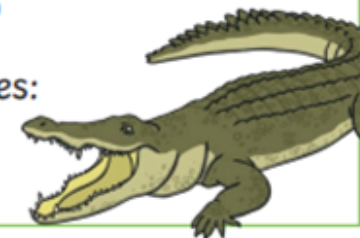
The world's rainforests are found on the **equator**, where it is **humid**, there is lots of rain and the sunlight is directly overhead.

**The Amazon Rainforest**

The Amazon rainforest is the largest **tropical** rainforest in the world. It is found in the continent of South America and spreads across nine countries.



- plant **species**: 40,000
- freshwater fish species: 2,400
- reptile species: 370
- insect species: 2.5 million

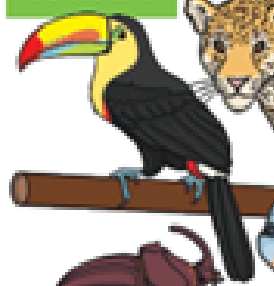


The second largest river in the world, the Amazon, runs through the Amazon rainforest. It is 4,345 miles (7000km) long.

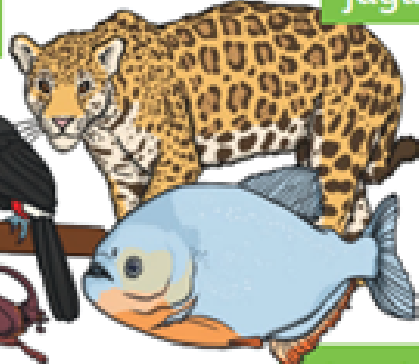
### Key Vocabulary

<b>crown</b>	The crown of a tree is the branches and leaves.
<b>dim</b>	Not bright.
<b>entwined</b>	Twisted together.
<b>nocturnal</b>	A nocturnal animal is one that is active at night and sleeps during the day.
<b>shrub</b>	A small woody plant with thick leaves.

toucan



jaguar



rhinoceros beetle

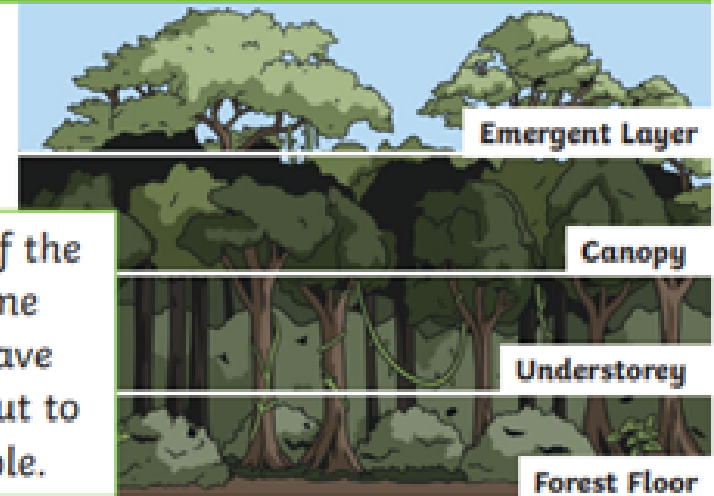


piranha



### Layers of the Rainforest

A rainforest is made up of many different layers.



#### The Emergent Layer

The emergent layer is made up of the tallest trees in the rainforest. Some can reach 70 metres tall. They have huge leafy **crowns** that spread out to catch as much sunlight as possible.

#### The Canopy

The **dense** leafy layer with trees about 40 metres tall. They spread their branches out to catch most of the sunlight and rain. This is the most popular place to live in the jungle.

#### The Understorey

Full of leafy bushes and small trees **entwined** with vines. It is dark and hot here. Many animals cross between this layer and the canopy above and many are **nocturnal**.

#### The Forest Floor

The forest floor, or **shrub** layer, is covered in a carpet of dead leaves. This layer is **dim** and shady. The lack of sunlight means fewer plants grow here.